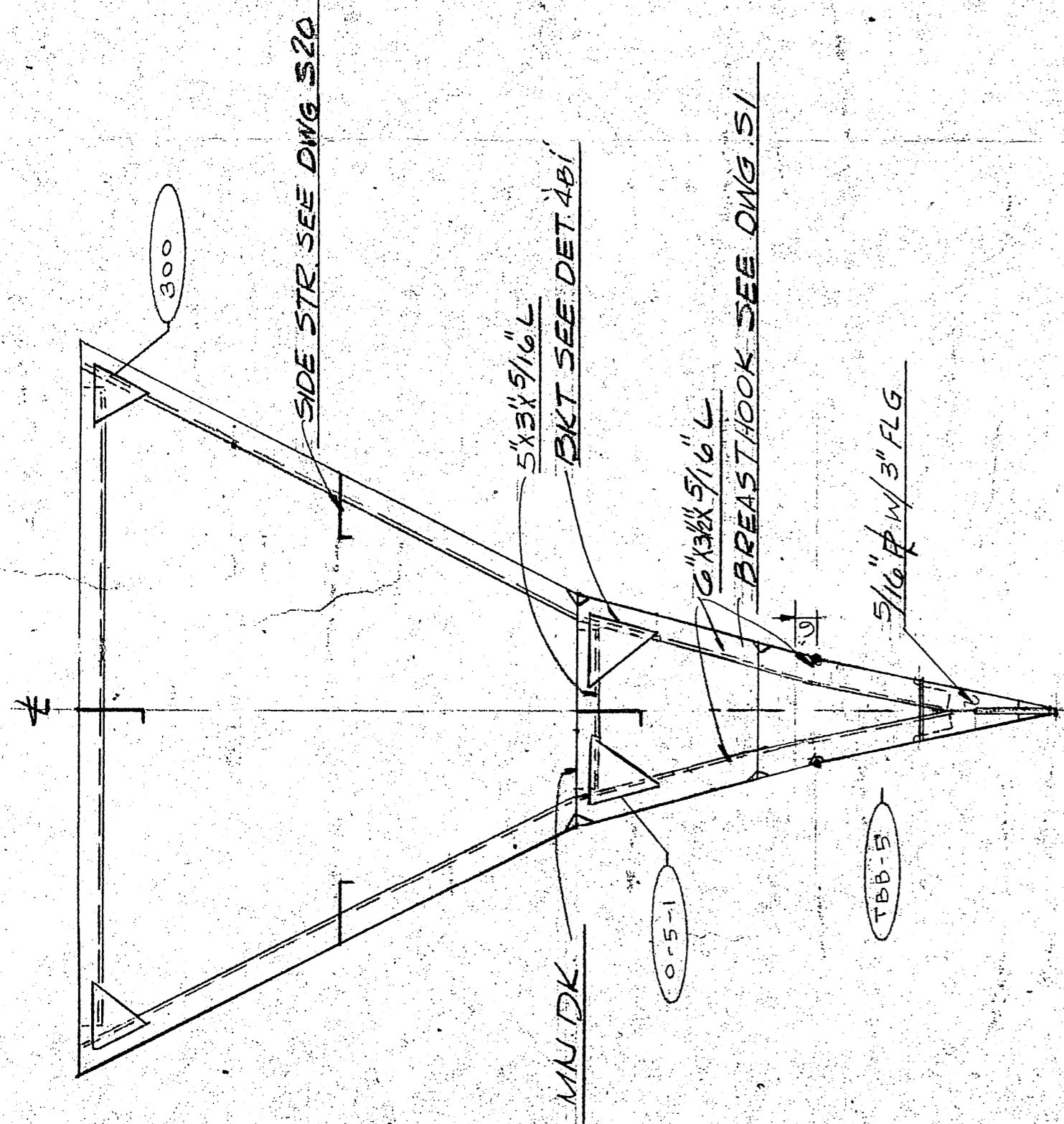
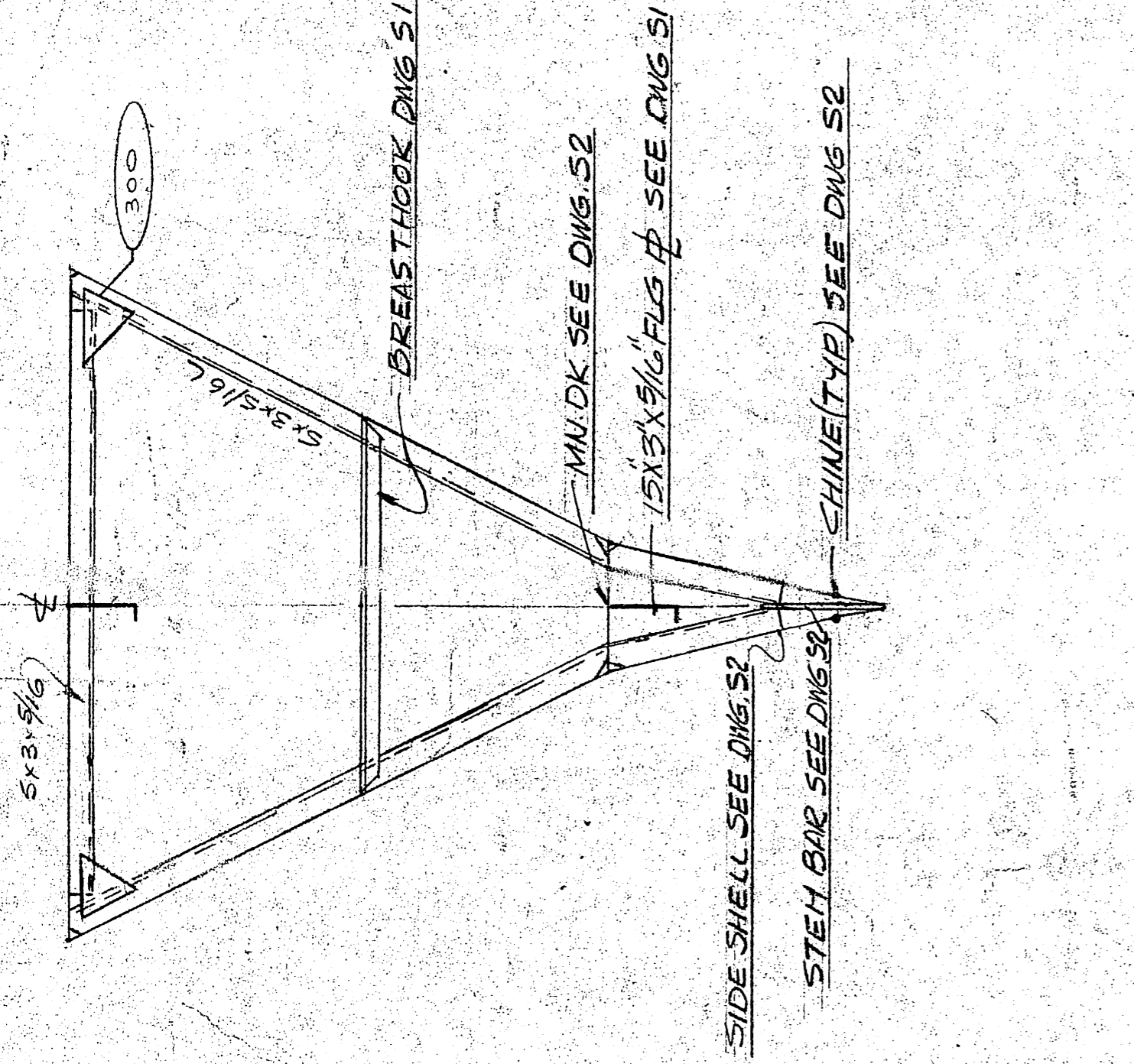


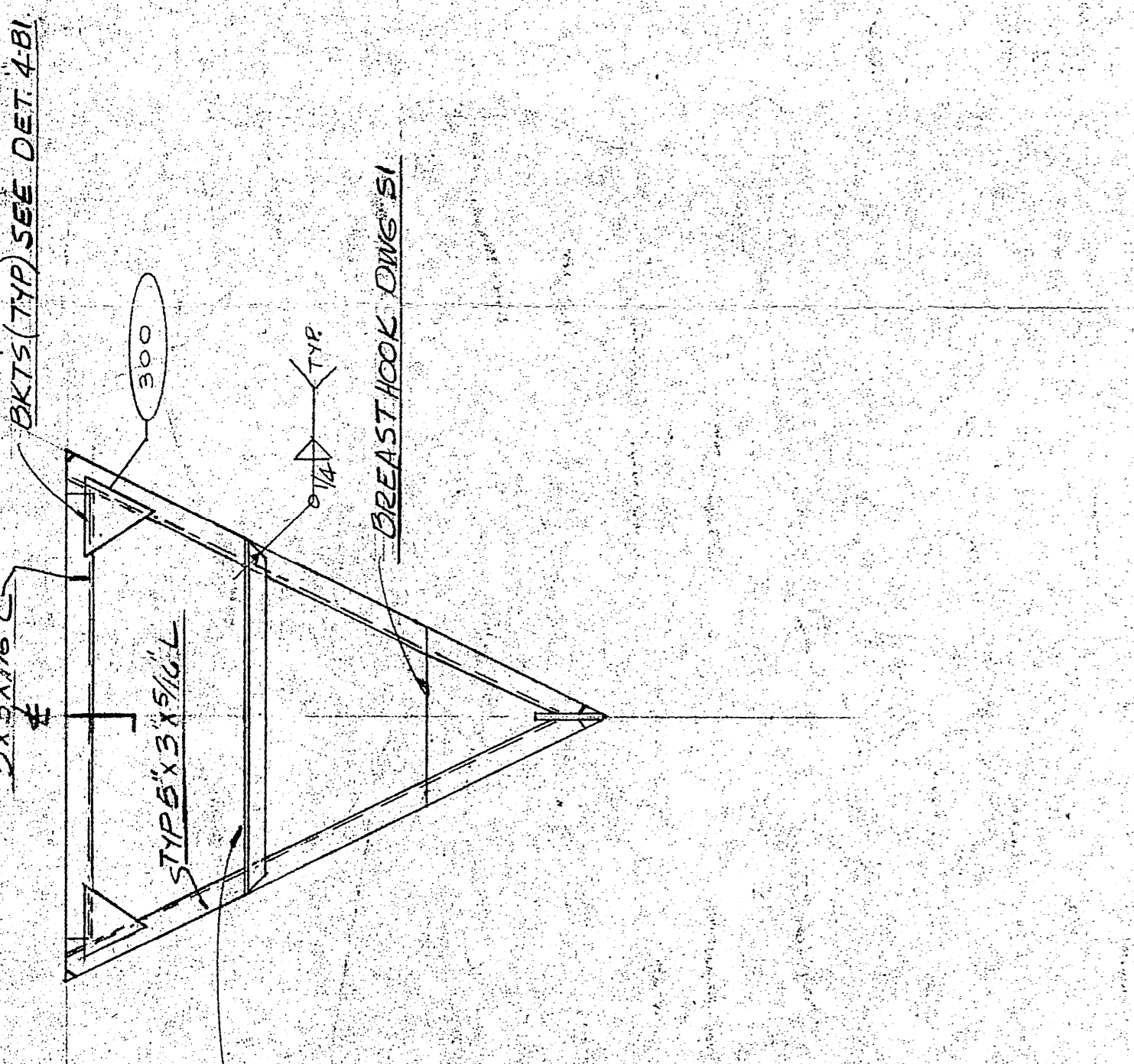
GENERAL NOTES  
 1. ALL FRAMES ARE VIEWED LKGAFT.  
 2. ALL SHIPSES TO BE BYE UNLESS NOTED OTHERWISE.



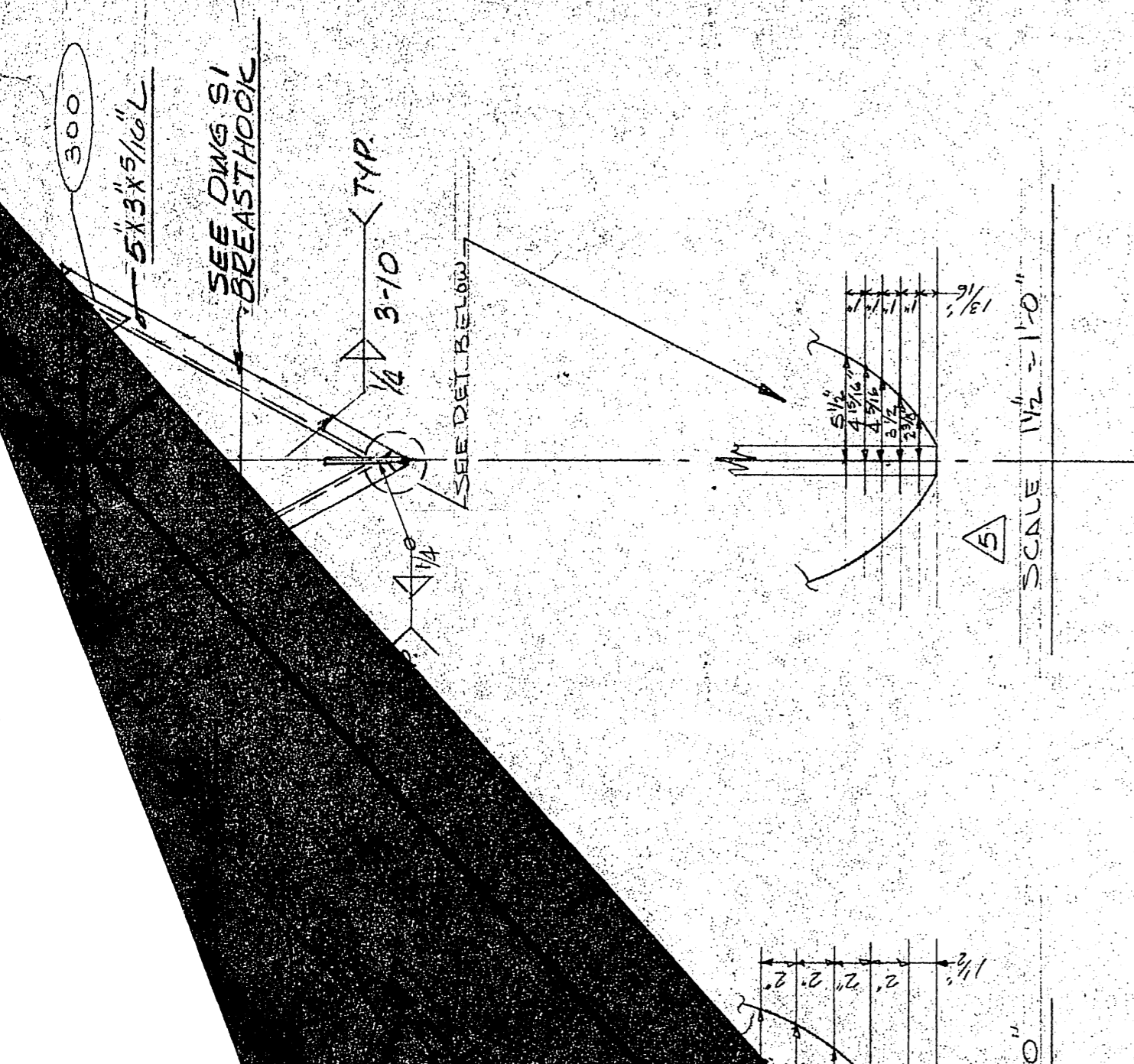
FRAME #5  
 SIM TO FR #4 EXCEPT AS NOTED



FRAME #4



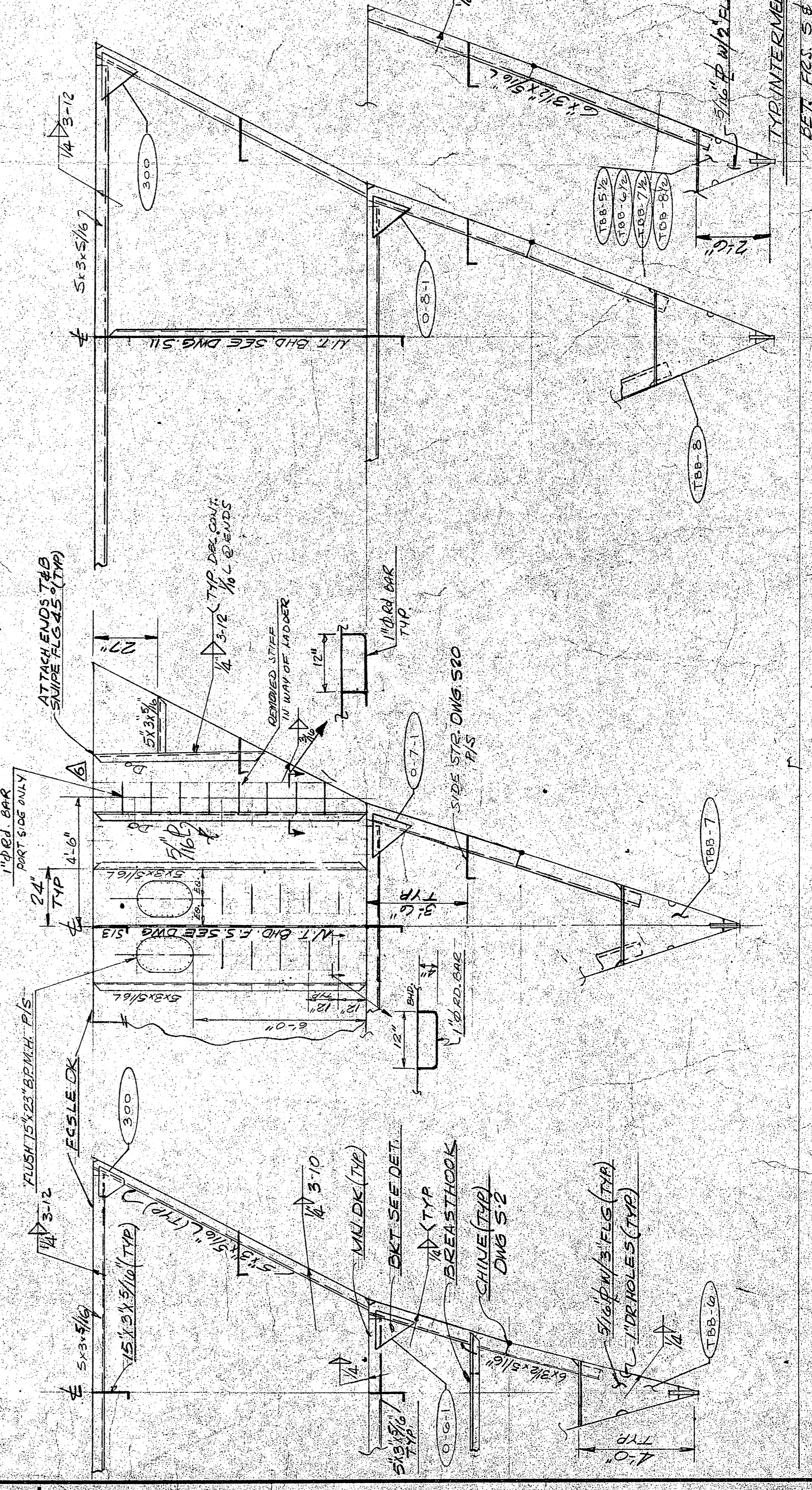
FRAME #3



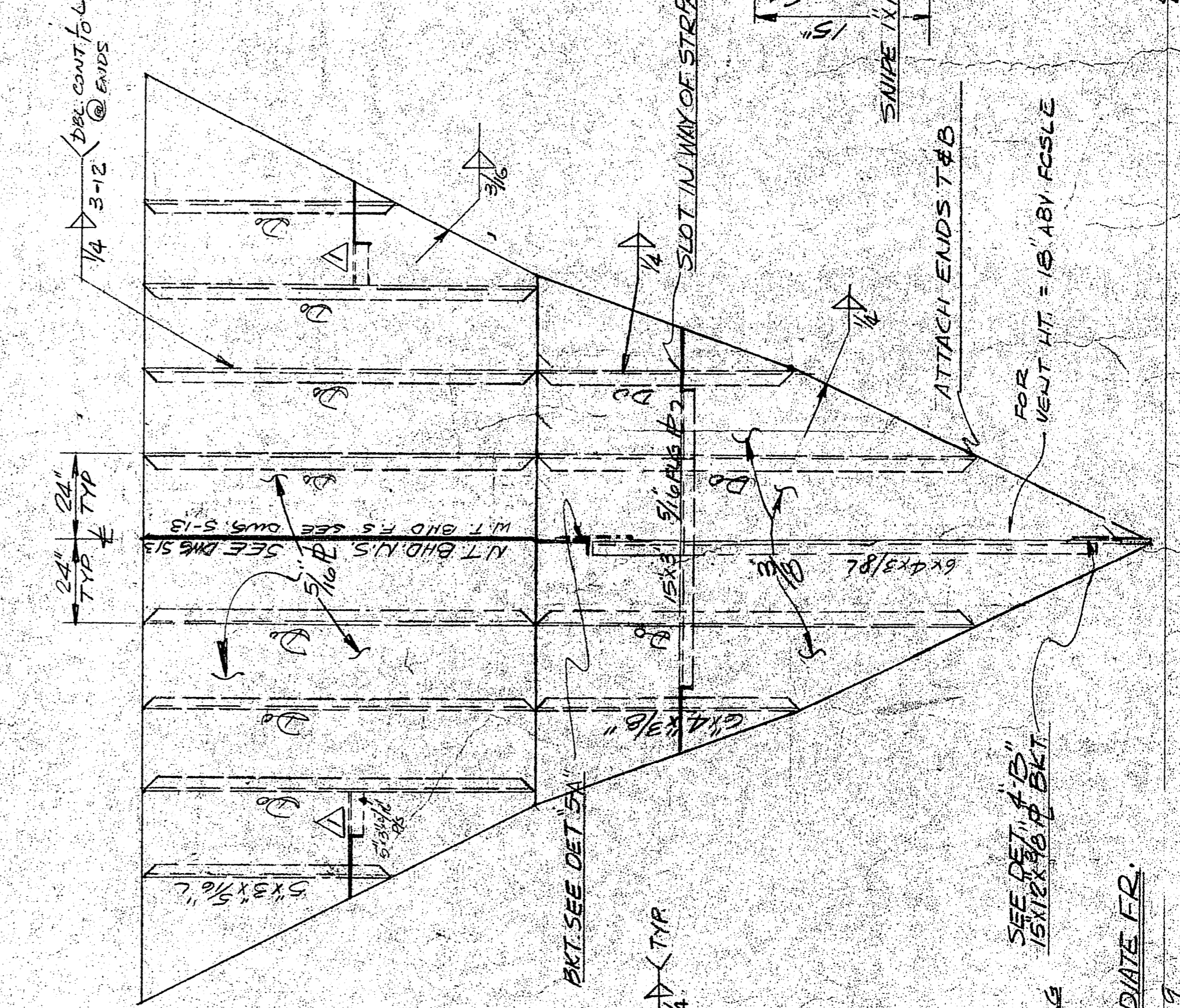
FRAME #2



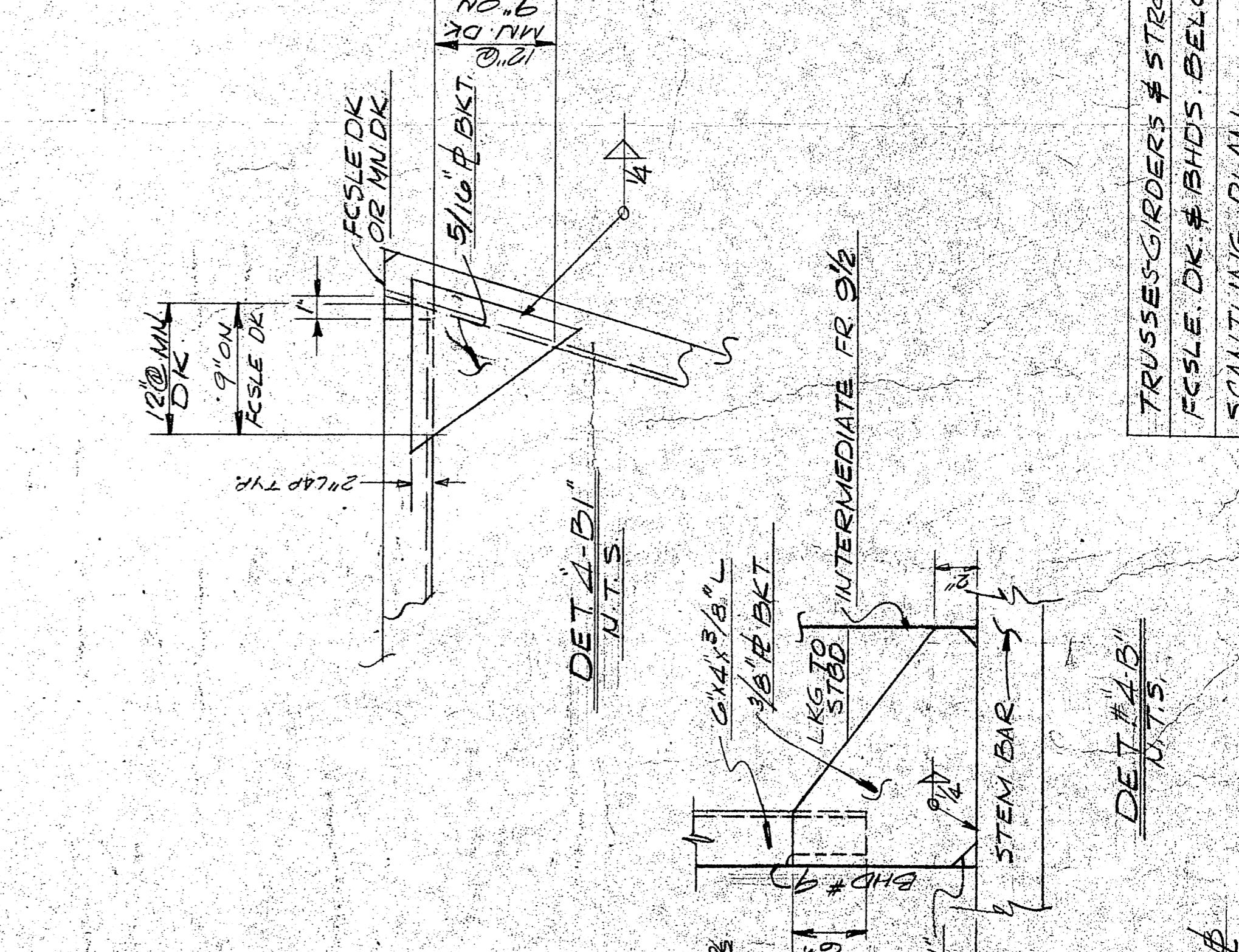
FRAME #1



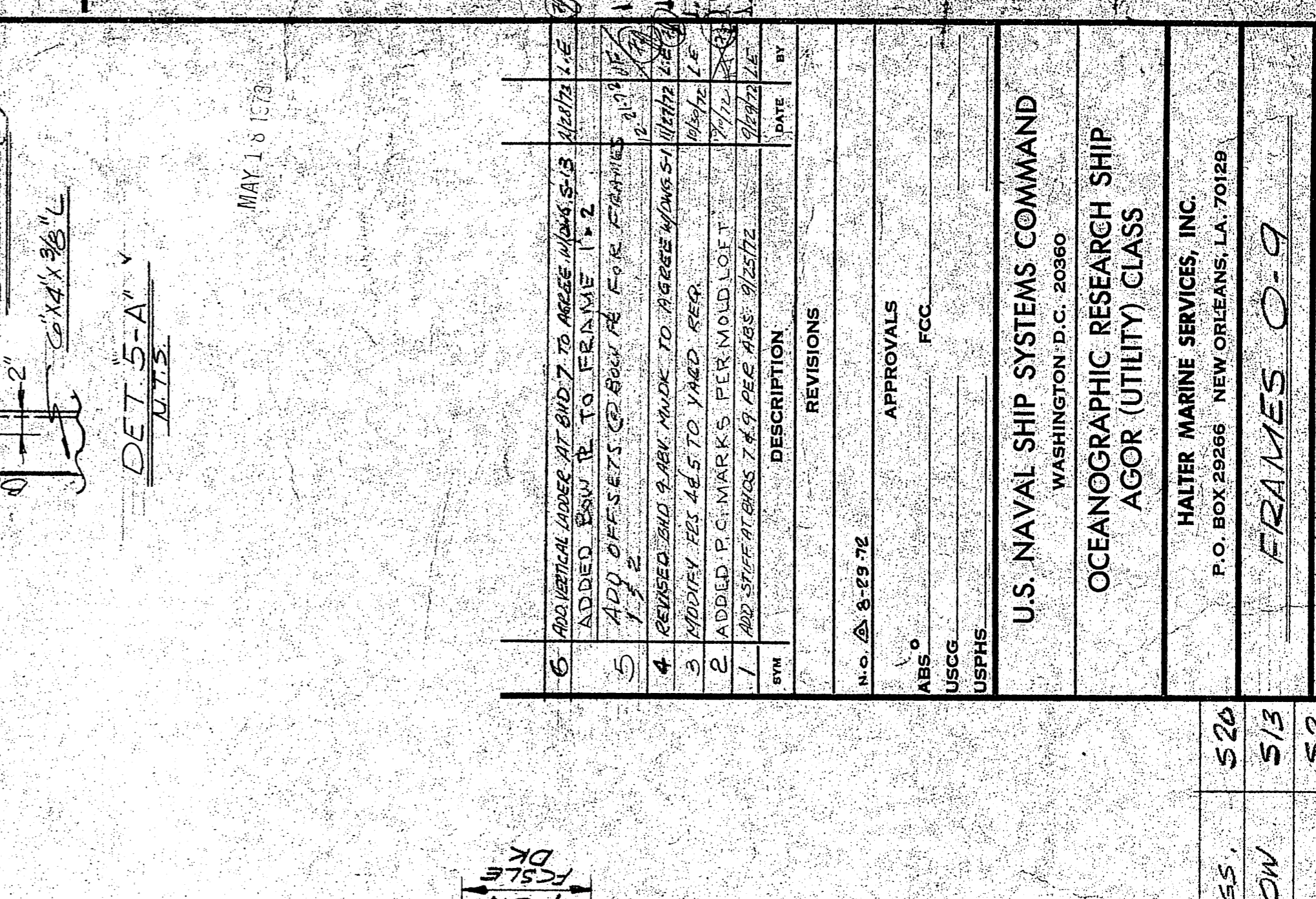
FRAME #6  
 SIM TO FR #5 EXCEPT AS NOTED



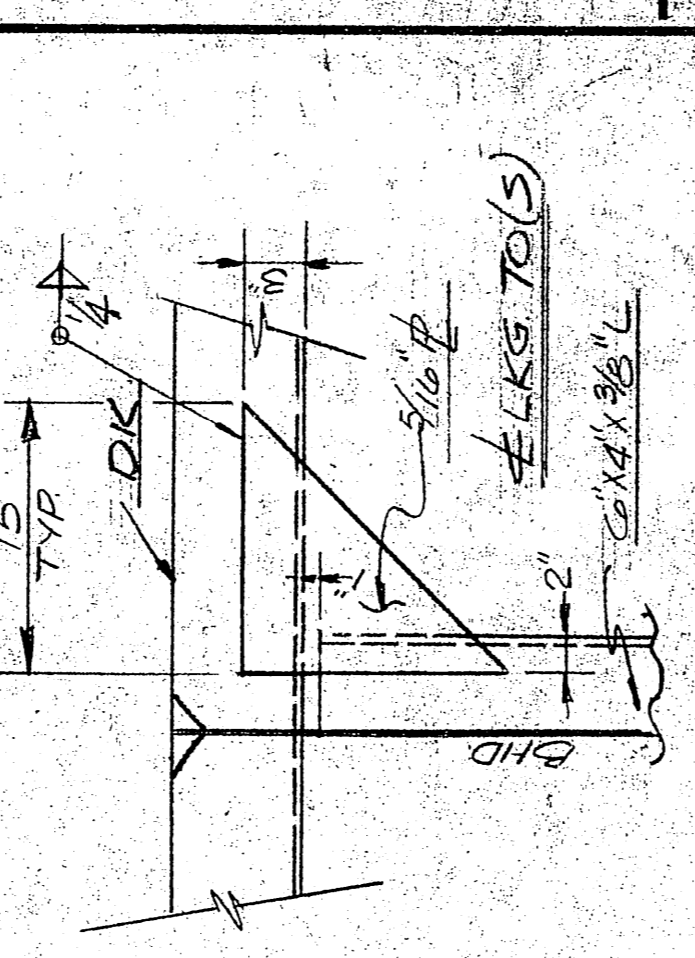
FRAME #7  
 SIM TO FR #6 EXCEPT AS NOTED



FRAME #8  
 SIM TO FR #6 EXCEPT AS NOTED



FRAME #9  
 SIM TO FR #6 EXCEPT AS NOTED



DET 5-A  
 N.T.S.

REVISIONS	
NO.	DESCRIPTION
6	ADDITIONAL WORK AT END 7 TO AGREE WITH S.3. UNITS L.E. ADDED ESU TO FRAME 1 & 2
5	ADD OFFSETS TO BKT AT F. R. FRAMES 1, 2, 3, 4
4	REVISED END 8 BKT MAKE TO AGREE WITH S.3. UNITS L.E.
3	ADDED P.C. MARKS PER MOLD LOT
2	ADDED P.C. MARKS PER MOLD LOT
1	ADD STRUCTURES 7 & 9 PER ABS. 25272
BY	DATE

N.O.	8-29-72
APPROVALS	FCC
USPHS	
U.S. NAVAL SHIP SYSTEMS COMMAND WASHINGTON, D.C. 20380	
OCEANOGRAPHIC RESEARCH SHIP AGOR (UTILITY) CLASS	
HALTER MARINE SERVICES, INC. P.O. BOX 28266 NEW ORLEANS, LA. 70128	
SCALE:	3/8" = 1'-0" DATE: 5/7/72
DRAWN BY:	HALTER
CHECKED BY:	SPENCER
HALTER	575
HULL NO.	576
DWG NO.	2187
JOB NO.	2187
NAVERIPS NO.	AB08 21-101-003
REV.	5

TRUSSES/GIRDERS # STRES.	S20
FCSLE DK # BIDS. BELOW	S13
SCANTLING PLAN	S2
CONSTRUCTION PROFILE	S1
TITLE	DWG
REFERENCES	